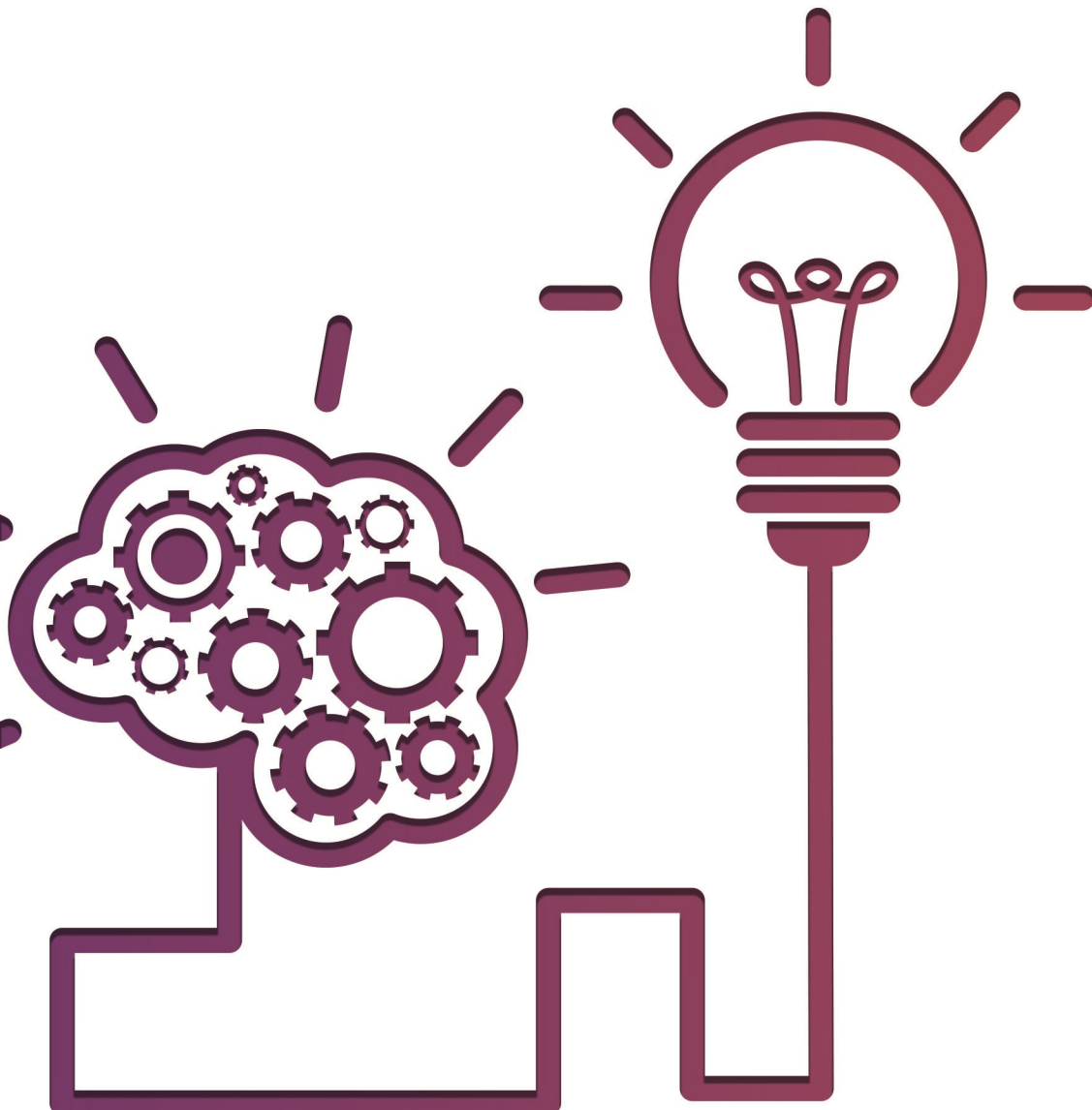




10 ZONE

d3

Dubai Design District





IO ZONE

KEY FEATURES



Area for local talent to work alongside international design, art and fashion houses



Community where creatives freely live, work and play



State of the Art IT infrastructure and facilities



Networking opportunities with world leaders



Wide variety of commercial and residential spaces



Full Free Zone benefits

Region's hub for the growing community of creative thinkers. It is a part of the Dubai Plan 2021 using the Smart City principles to create an innovation-led economy.



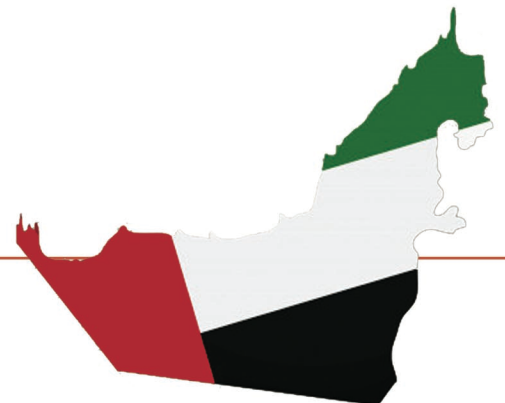
DOUBLE-TAX AVOIDANCE TREATY

D3 Free Zone company formation are from the extensive network of **double-tax avoidance treaties** that the United Arab Emirates has signed with countries worldwide, including countries such as India, Pakistan, Singapore, China, Malaysia, Canada, Germany, Italy, Austria and Holland.



STRATEGIC LOCATION

Dubai offers the additional benefits of a very high **standard of living** and a **vibrant expatriate community** with people from over **180 nations living and working in the region.**





Recommended for

Fashion and interiors startups,
established design brands



100% foreign ownership



0% corporate tax



100% repatriation of capital and profits



0% import or re-export duties



0% personal income tax



No currency restrictions



No restriction on foreign talent or employees

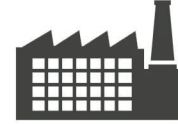


TYPES OF LICENSES



IO ZONE

Trading | Service | Light Industrial | Dual licensing with Dubai mainland
(fashion/interiors/luxury-related only)



TYPES OF COMPANIES

FZ-LLC

An FZ-LLC is formed as a separate legal entity, with shareholders as individuals and/or corporates. Minimum capital requirement depends on the business activity. Its shareholders can be an individual, corporate, or both.

BRANCH

A branch or a representative office of a parent company which already exists outside of the D3 Free Zone.



FACILITIES OFFERED

Offices | Showrooms



REGISTRATION AND LICENSING COSTS



10 ZONE

REGISTRATION (YEAR 1)



ANNUAL LICENSING



VISAS



Based on size of facility availed, usually around 80 sq.ft. per visa.

LEASING





INDIVIDUAL SHAREHOLDER

- Application Form
- Business Plan
- Passport copy of the shareholder/s, director/s, general manager, company secretary
- CV of the shareholder(s)
- Bank Reference Letter of the shareholder(s)
- Resolution of the Incorporation of FZ-LCC
- NOC for manager from UAE Sponsor (if applicable)
- RIC form for shareholder(s), director(s), & manager
- Share capital proof from bank or deposit receipt in trust account



CORPORATE SHAREHOLDER

- Application for Registration
- Business Plan
- Certificate of Incorporation
- Certificate of Continuity or Good Standing
- MoA and AoA of Parent Company
- Resolution for the Incorporation of FZ-LLC
- NOC for manager from UAE Sponsor (if applicable)
- RIC form for shareholder(s), director(s), & manager
- Share capital proof from bank or deposit receipt in trust account
- Passport copy of the shareholder/s, director/s, general manager, company secretary



BRANCH

- Application for Registration
- Business Plan
- Certificate of Incorporation
- Certificate of Continuity or Existence or Good Standing
- MoA and AoA of Parent Company
- Resolution for the Incorporation of FZ-LLC
- NOC for manager from the current UAE Sponsor (if applicable)
- RIC form for manager
- RIC form for corporate



10 ZONE

ABOUT US

WE ARE **10 ZONE**



Setting up businesses in Dubai since 2014.



Experts in consultancy and company formation.



Team of highly qualified Lawyers, Chartered Accountants and Relationship Managers.



English, Arabic, French, German, Turkish, Hindi, Afrikaans, & Tagalog.



START UP-FRIENDLY



TIME-SAVING



COST-EFFICIENT



HOLISTIC SOLUTIONS

OUR SERVICES



COMPANY FORMATION



ACCOUNTING & BOOKKEEPING



VISA PROCESSING



LEGAL



HUMAN RESOURCES





10 ZONE

A FRESH LOOK AT DOING BUSINESS



10ZONE.AE



connect@10zone.ae



+971 4 267 6200



18th Floor, One by Omniyat, Business Bay,
Dubai, United Arab Emirates

